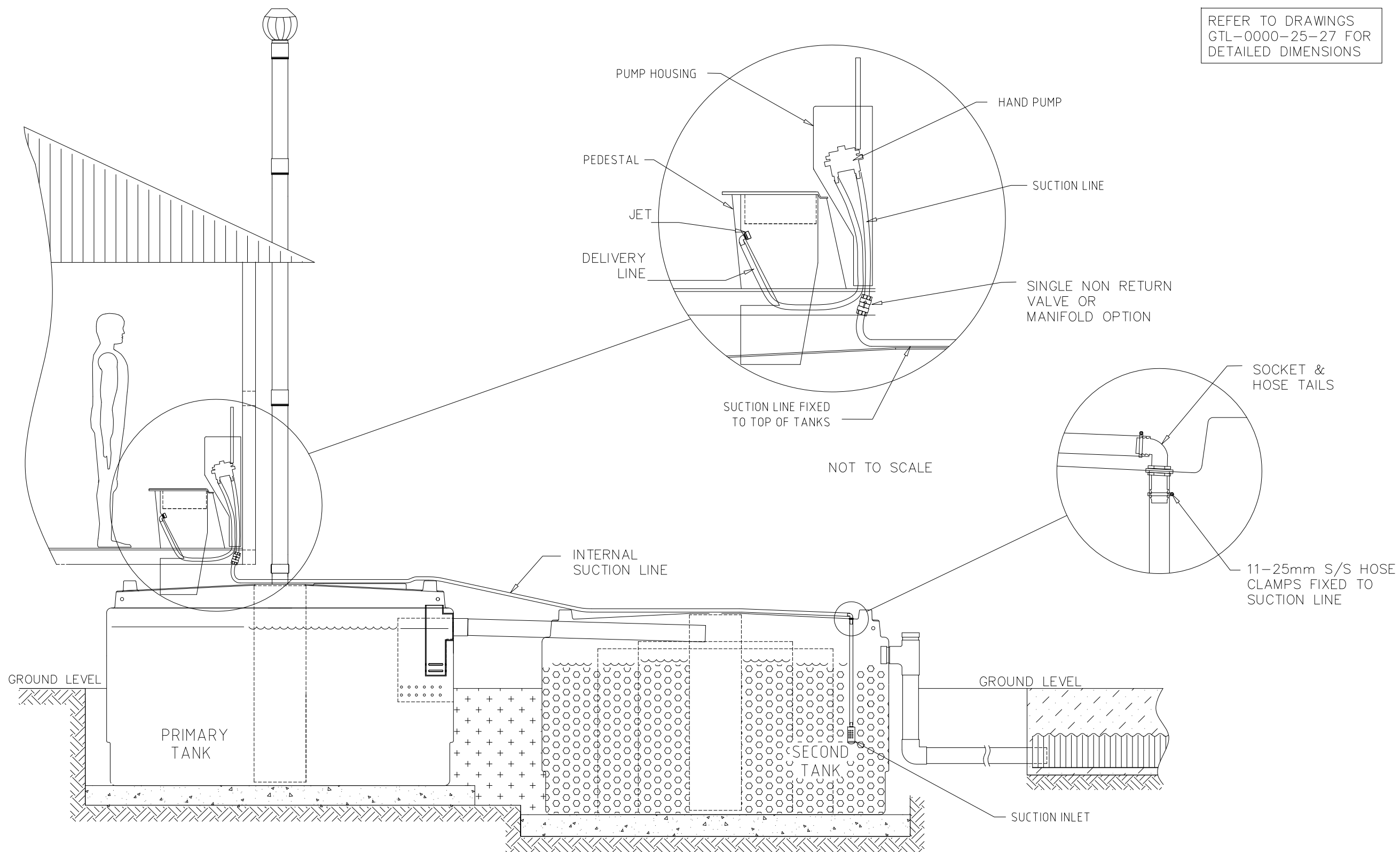


REFER TO DRAWINGS
GTL-0000-25-27 FOR
DETAILED DIMENSIONS



No.	DATE	BY	DESCRIPTION	ENG. CHK.	GOUGH APPROV.
B	8.7.04	D.H	UPDATED HAND PUMP AND JET		
A	4.12	S.N	FIRST DRAWN		
			REVISION	CHK.	APPROV.

GP AUSTRALIA
GOUGH PLASTICS
 Custom Rotational Moulders

Gough Industries Pty. Ltd.
 833 Ingham Road
 Bohle, Townsville
 P.O. Box 7570, Garbutt BC, Qld. 4814.
 Telephone 07 4774 7606
 Facsimile 07 4774 7608
 A.C.N. 010 028 547

This drawing remains the property of Gough Industries Pty. Ltd.
 It is subject to Gough Industries Pty. Ltd.'s recall and must not
 be reproduced in part or whole or it's contents divulged to third parties
 without prior written approval from Gough Industries Pty Limited.

	Signature	Date
DRAWN	S.NAGY	4.12.00
DRN. CHK		
ENGINEER		
ENG. CHK		
SUBMITTED FOR APPR.		
Eng. APPROVAL		

HYBRID TOILET - PAPER DAMPENER CROSS SECTION & DETAILS			
SCALE	1:40	A4	Gough Plastics Drg. No. GTL-0000-14
EDIT DATE=	CUDATE		CAD FILE : FILE:_NUMBER